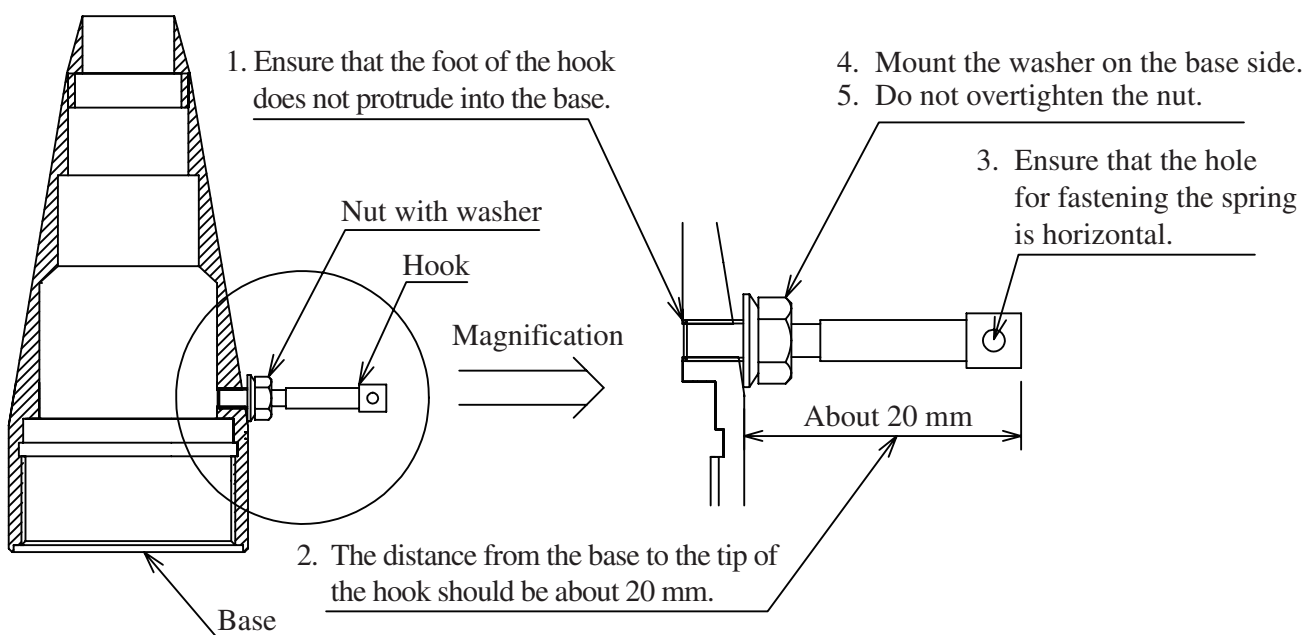


Precautions for Replacement of WS-15 Hook

Please observe the following precautions when mounting a replacement hook.

1. Ensure that the foot of the hook does not protrude into the base.
Otherwise the microphone or preamplifier may be damaged.
2. The distance from the base to the tip of the hook should be about 20 mm.
3. Ensure that the hole for fastening the spring is horizontal.
4. Mount the washer on the base side.
5. Do not overtighten the nut.
Otherwise the hook may become deformed.



 **RION CO., LTD.**

3-20-41 Higashimotomachi, Kokubunji, Tokyo 185-8533, Japan

<http://www.rion.co.jp/english/>

No. 57840 12-08